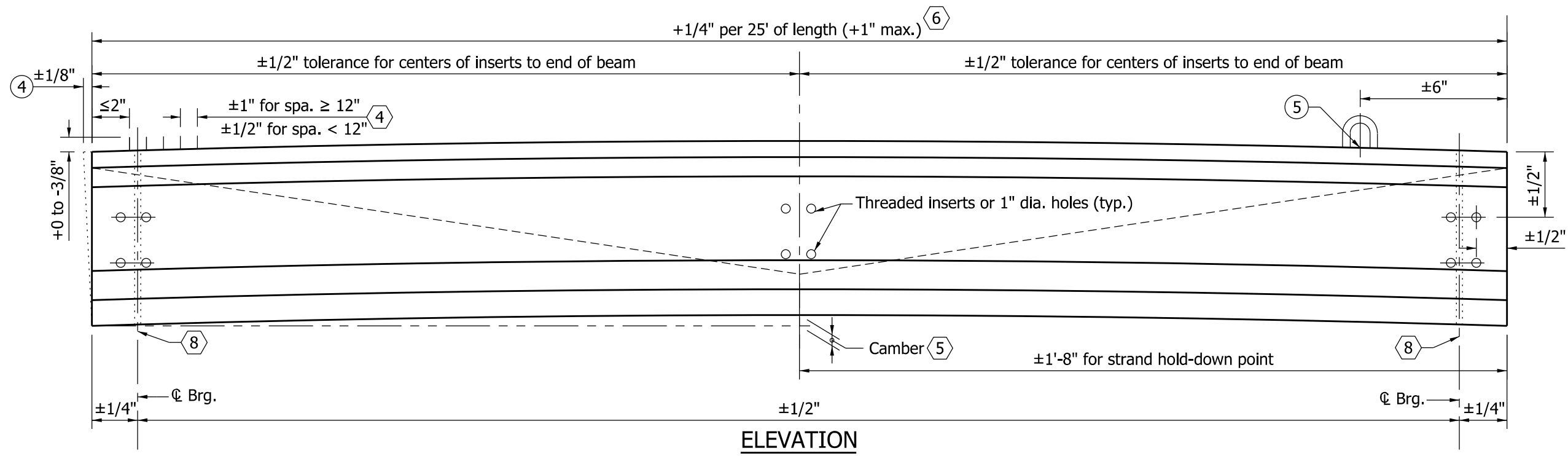


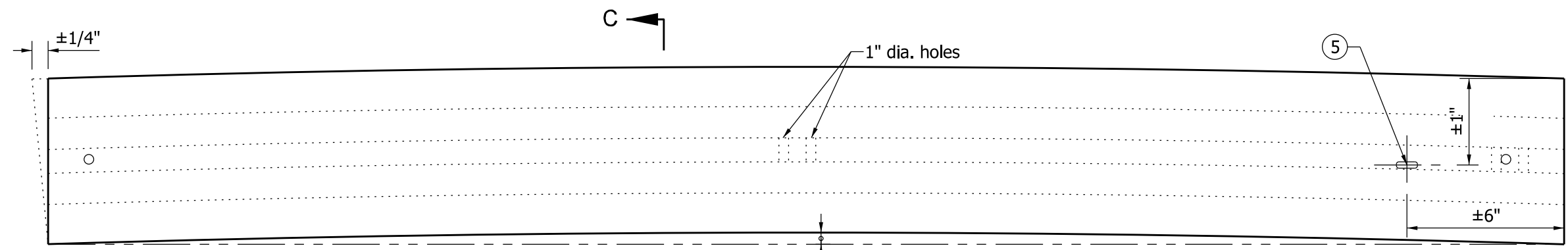
**NOTES:**

1. See Standard Drawing E 707-BPBF-04 for General Notes.
2. Center of gravity of depressed-strands group at the end of beam shall not be more than ±1/2".
3. Tolerance of position of post-tensioning duct shall be ±1/4".
- ④ Horizontal tolerance of beam ends for deviation from a true vertical with respect to top and bottom surfaces. Vertical tolerance shall be ±1/8" per 12" of beam height.

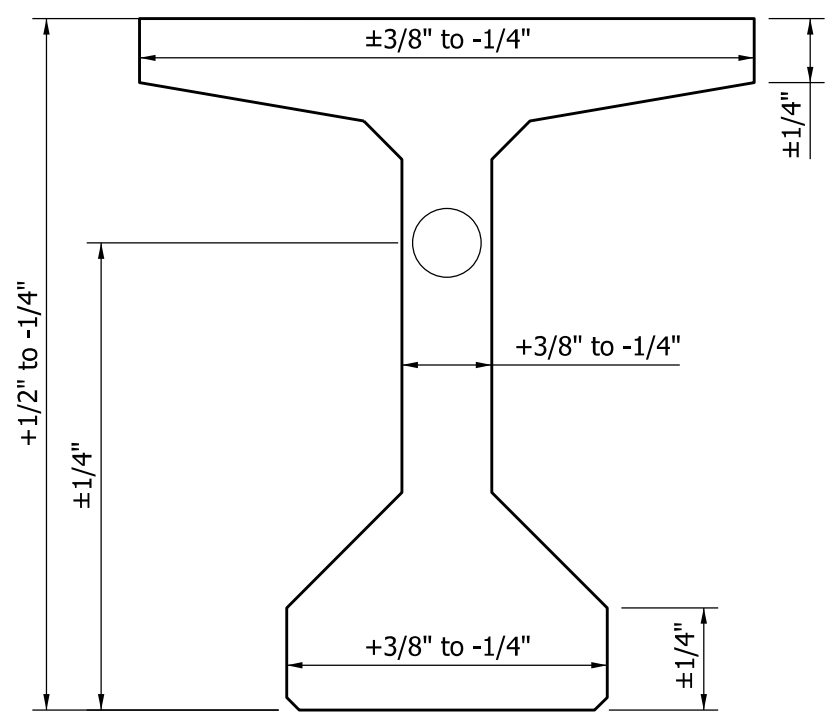
INDIANA DEPARTMENT OF TRANSPORTATION									
FABRICATION TOLERANCES PRESTRESSED I BEAM									
SEPTEMBER 2012									
STANDARD DRAWING NO.	E 707-BPBF-02								
	<table style="width: 100%; border-collapse: collapse;"> <tr> <td style="width: 70%; border-bottom: 1px solid black;">/s/ <i>Richard L. VanCleave</i></td> <td style="width: 30%; border-bottom: 1px solid black;">09/04/12</td> </tr> <tr> <td style="font-size: small;">SUPERVISOR, ROADWAY STANDARDS</td> <td style="font-size: small;">DATE</td> </tr> <tr> <td style="border-bottom: 1px solid black;">/s/ <i>Mark A. Miller</i></td> <td style="border-bottom: 1px solid black;">09/04/12</td> </tr> <tr> <td style="font-size: small;">CHIEF ENGINEER</td> <td style="font-size: small;">DATE</td> </tr> </table>	/s/ <i>Richard L. VanCleave</i>	09/04/12	SUPERVISOR, ROADWAY STANDARDS	DATE	/s/ <i>Mark A. Miller</i>	09/04/12	CHIEF ENGINEER	DATE
/s/ <i>Richard L. VanCleave</i>	09/04/12								
SUPERVISOR, ROADWAY STANDARDS	DATE								
/s/ <i>Mark A. Miller</i>	09/04/12								
CHIEF ENGINEER	DATE								



**ELEVATION**



**PLAN**



**SECTION C-C**

**NOTES:**

1. See Standard Drawing E 707-BPBF-04 for General Notes.
2. Center of gravity of depressed-strands group at the end of beam shall not be more than ±1/2".
3. Tolerance of position of post-tensioning duct shall be ±1/4".
- ④ Horizontal tolerance of beam ends for deviation from a true vertical with respect to top and bottom surfaces. Vertical tolerance shall be ±1/8" per 12" of beam height.
- ⑤ Location of handling device.

<b>INDIANA DEPARTMENT OF TRANSPORTATION</b>	
<b>FABRICATION TOLERANCES PRESTRESSED BULB-TEE BEAM</b>	
<b>SEPTEMBER 2012</b>	
<b>STANDARD DRAWING NO. E 707-BPBF-03</b>	
	<i>/s/ Richard L. VanCleave</i> 09/04/12 SUPERVISOR, ROADWAY STANDARDS      DATE
	<i>/s/ Mark A. Miller</i> 09/04/12 CHIEF ENGINEER      DATE

**GENERAL NOTES :**

1. Tolerances shown are maximum permissible variations from the dimensions shown on the plans or shop drawings. Tolerances shall not be considered cumulative. Longitudinal tolerances are based on design length. Casting length shall be adjusted to compensate for shrinkage and plastic flow.
2. End stirrup bars shall not be more than 2" from the end of the beam.
3. Mild reinforcing steel concrete cover tolerance shall be 1/8" to +3/8".

④ Tolerances for reinforcing bars for composite beam.

⑤ Variation of camber shall not be more than 1" on one span nor more than 1/2" between adjacent members to be measured at time of erection.

Permitted camber variation from design camber is as follows:

I-beam or bulb-tee beam:  $\pm 1/8"$  per 10'-0" length with  $\pm 1/2"$  maximum for member length of 80'-0" or less

$\pm 1"$  maximum for member length of greater than 80'-0"

Box beam:  $\pm 1/8"$  per 10'-0" length with  $\pm 1/2"$  mm maximum

⑥ Tolerance in length of beam shall be checked after the final curing phase and within three days prior to shipping.

⑦ Horizontal-alignment tolerance shall be checked immediately after removal of forms and strand release, and prior to removal from bed.

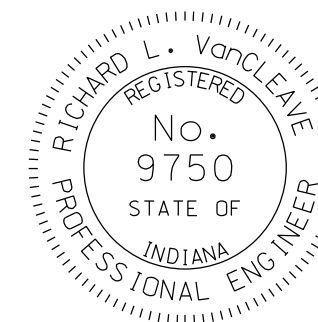
⑧ At concrete bearing area, deviation from plane surface when tested in all directions of the plane surface with a steel straightedge shall not be more than  $\pm 1/16"$ .

INDIANA DEPARTMENT OF TRANSPORTATION

FABRICATION TOLERANCES  
GENERAL NOTES

SEPTEMBER 2011

STANDARD DRAWING NO. E 707-BPBF-04



DESIGN STANDARDS ENGINEER

/s/ Richard L. VanCleave 09/01/11  
DESIGN STANDARDS ENGINEER DATE

/s/ Mark A. Miller 09/01/11  
CHIEF HIGHWAY ENGINEER DATE